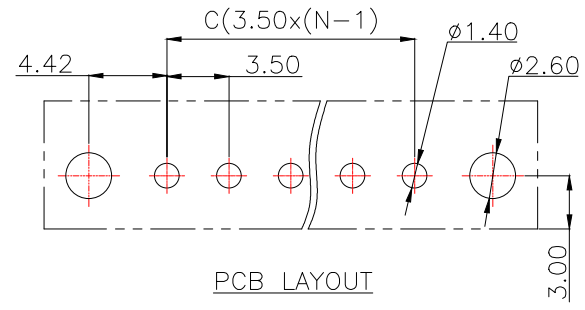
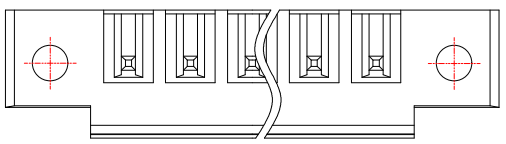
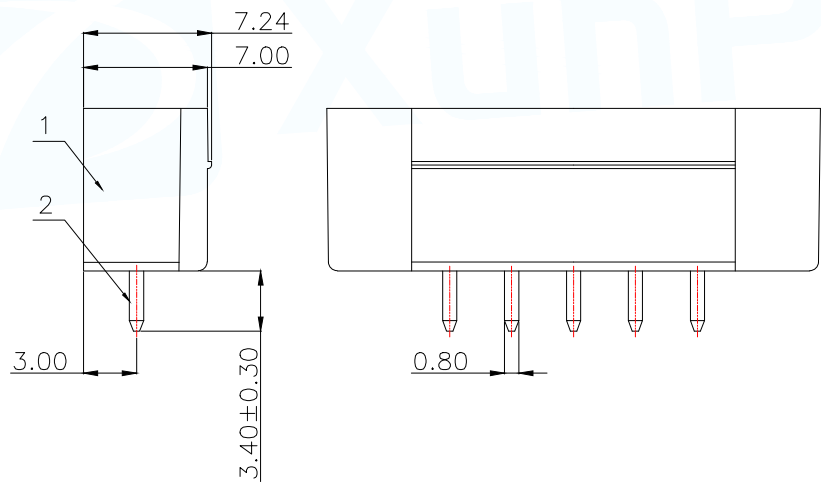
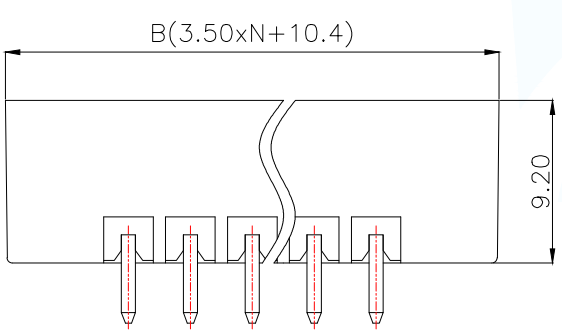
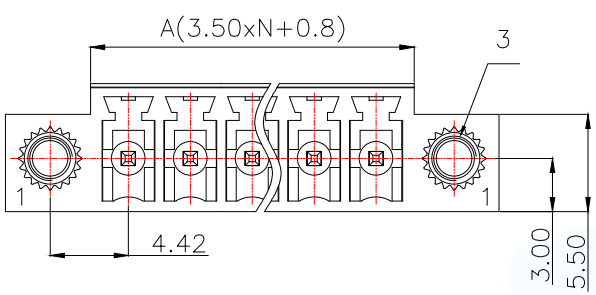


General tolerances(mm)														0.1/10
0 ~ 3	>3 ~ 6	>6 ~ 10	>10 ~ 18	>18 ~ 30	>30 ~ 50	>50 ~ 80	>80 ~ 120	>120 ~ 180	>180 ~ 250	>250 ~ 315	>315 ~ 400	>400 ~ 500	>500	
±0.12	±0.18	±0.22	±0.26	±0.31	±0.37	±0.57	±0.80	±0.93	±1.05	±1.15	±1.60	±2.20	±2.50	±2°

Product model	PIN	A	B	C
DGB350-2P12-MG361	2	7.80	17.40	3.50
DGB350-3P12-MG361	3	11.30	20.90	7.00
DGB350-4P12-MG361	4	14.80	24.40	10.50
DGB350-5P12-MG361	5	18.30	27.90	14.00
DGB350-6P12-MG361	6	21.80	31.40	17.50
DGB350-7P12-MG361	7	25.30	34.90	21.00
.....
DGB350-24P12-MG361	24	3.5xN+0.8	3.5xN+10.4	3.50x(N-1)



UL Standard	B
Rated Voltage(V)/Current(A)	300/8
IEC Standard	
Overvoltage Category/Pollution Degree	II/2
Rated Voltage(V)/Current(A)	250/7
Rate Impulse Voltage(KV)	2.5
Pitch(mm)/Poles	3.50/N=02~22P
Operating temperature(°C)	-40C~+105C
Conform to RoHS	Yes

3	Screw cap	Copper Alloy	M2.5
2	Pin	Copper Alloy	Sn Plated
1	Housing	PA66	UL94V-0
ITEM	NAME OF PART	MATERIAL	NOTES

MANUFACTURE DWG

UNLESS OTHERWISE SPECIFIED TOLERANCES

DECIMALS: ANGLES:

CUSTOMER COPY

东莞市讯普电子科技有限公司
DongGuan XunPu Electronics Co.,Ltd

TITLE: Socket-type terminal

PAR: DGB350-NP12-MG361

DWN: CHKD: APVD: SCALE N:A: UNIT:MM: SIZE:A4: SHEET:1F1: REV:A