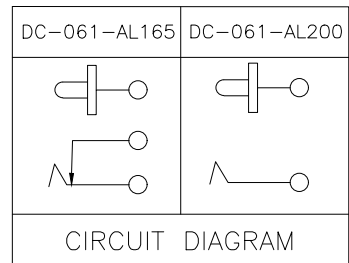
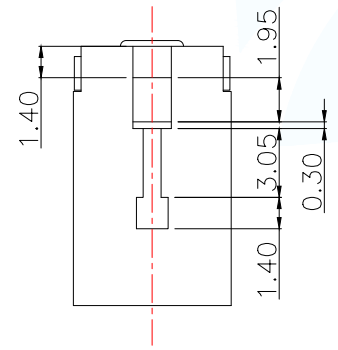


RECOMMENDED PCB LAYOUT
GENERAL TOLERANCE ±0.05



Model	PIN	DC MATE PLUG
DC-061-AL165	ø1.65	ø4.75
DC-061-AL200	ø2.0	ø5.5
DC-061-AL235	ø2.35	ø5.5
DC-061-AL250	ø2.5	ø5.5

Main technical performance	
Rated electrical load	DC 30V 1.0A
Contact resistance	≤0.03Ω
Insulation resistance	≥100MΩ
Pressure resistance	AC500V(50Hz)min
Insertion force	5-20N
service life	5000cycles

MANUFACTURE DWG			东莞市讯普电子科技有限公司 DongGuan XunPu Electronics Co.,Ltd	
UNLESS OTHERWISE SPECIFIED TOLERANCES			TITLE: DC SOCKET	
DECIMALS:	ANGLES:	PAR	DC-061-ALXXX	
0.0-10.0mm ±0.10mm		DWN	Lucas	
10.0-20.0mm ±0.15mm		CHKD	Ethan	
20.0-50.0mm ±0.20mm		APVD	Jacob	
		SCALE:1:1	UNIT:MM	
		CUSTOMER COPY	SIZE:A4	SHEET:1F1
				REV:A