

Note:

1.Material:

- 1.1 InsertMolding: PA9T UL 94V-0 Black
- 1.2 Contact:C7025,t=0.12mm contact area 1U” welding area g/f 中夹片 susT=0.15mm
- 1.3 Shell: Zinc Alloy.表面镀镍50 MIN
- 1.4 Waterproof ring:red silicone

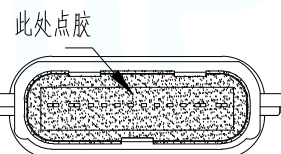
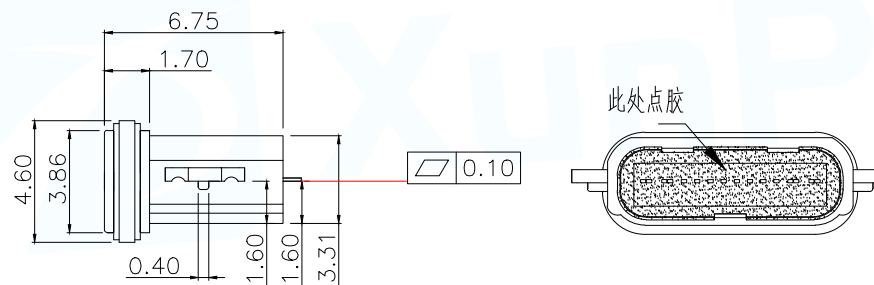
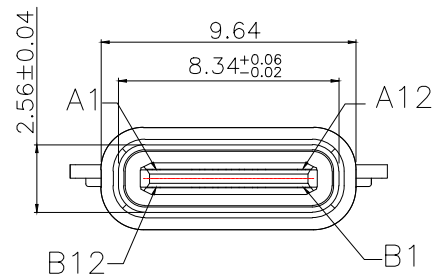
2.ELECTRICAL:

- 2-1:CURRENT RATING:
VBUS AND GND CONTACTS RATED AT 1.25A PARALLELED FOR A TOTAL OF 5A;
- 2-2:INITIAL CONTACT RESISTANCE :40 MEGOHMS
- 2-3:DIELECTRIC WITHSTANDING VOLTAGE:
30V AC MIN;

3:MECHANICAL CHARACTERISTICS:

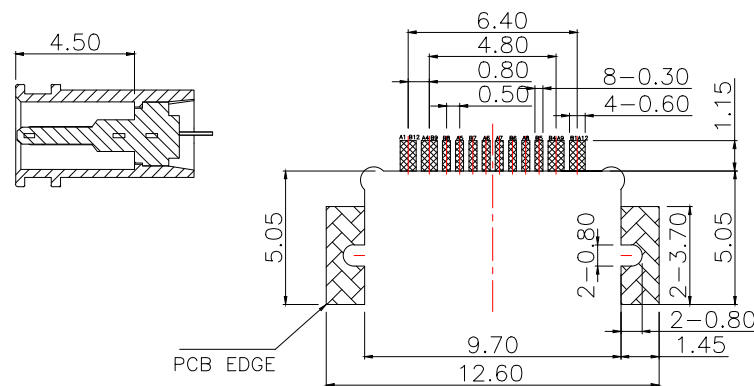
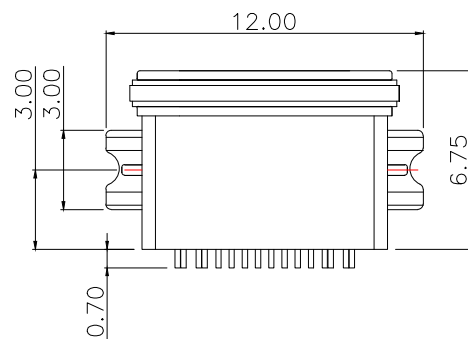
- 3-1:MATING FORCE:5~20N
- 3-2:UNMATING FORCE:8~20N(INITIAL),
6~20N(AFTER 10000 CYCLES)
- 3-3:FREQUENCY: 200±50 CYCLES /HOUR,10000 CYCLES
- 3-4:OPERATING TEMPERATURE ;-40°~80°.

4:WATERPROOF: IP-X7.



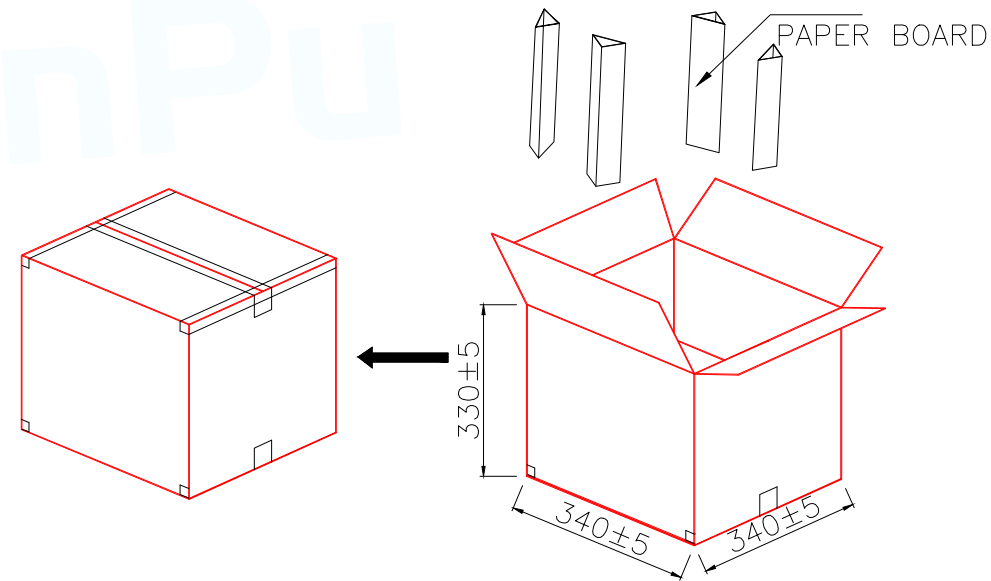
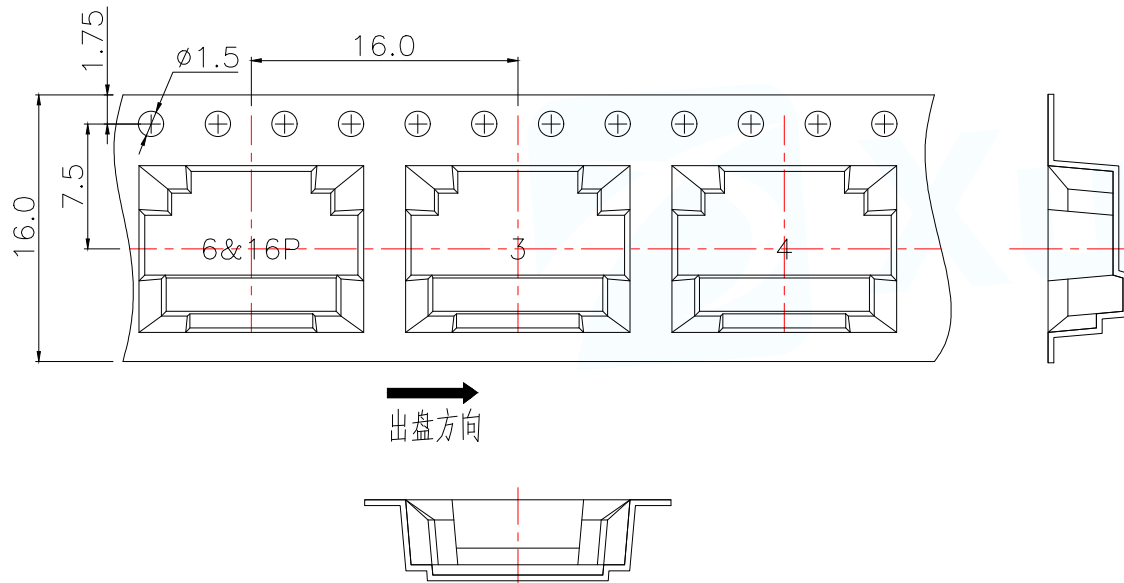
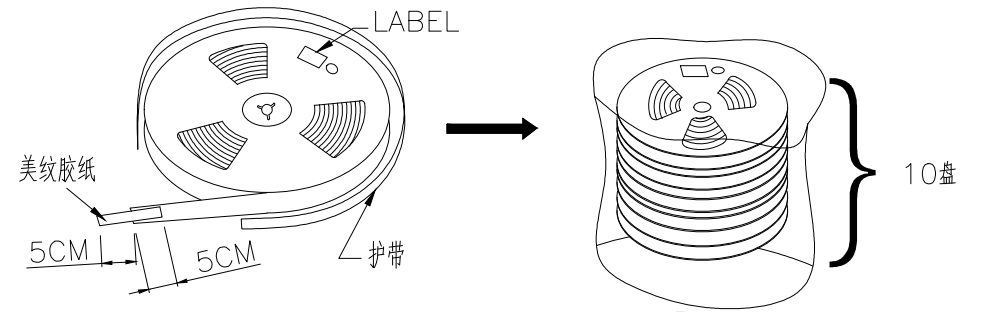
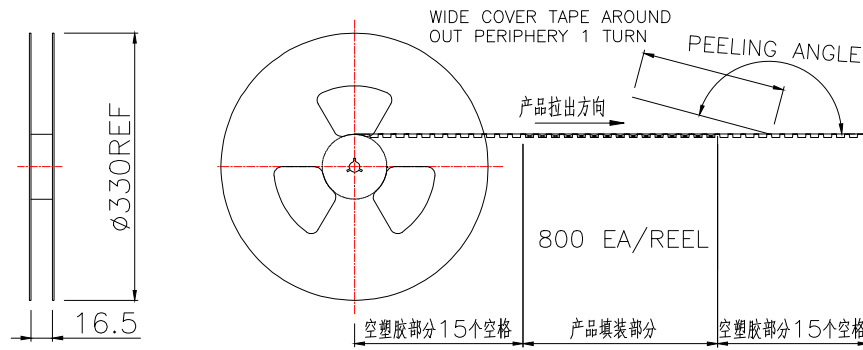
USB TYPE-C PIN ASSIGNMENTS

A1	GND	B12	GND
A4	VBUS	B9	VBUS
A5	CC1	B8	SBU2
A6	DP1	B7	DN2
A7	DN1	B6	DP2
A8	SBU1	B5	CC2
A9	VBUS	B4	VBUS
A12	GND	B1	GND
PIN	SIGNAL NAME	PIN	SIGNAL NAME



RECOMMENDED PCB LAYOUT
GENERAL TOLERANCE ±0.05

MANUFACTURE DWG		东莞市讯普电子科技有限公司 DongGuan XunPu Electronics Co.,Ltd	
UNLESS OTHERWISE SPECIFIED TOLERANCES			TITLE: TYPE-C 16pin 沉板1.6压铸防水
			PAR TYPE-C-318B-WFRX7SC160
DECIMALS:	ANGLES:		DWN Lucas
.X:±0.20	X.:±2°		CHKD Ethan
.XX:±0.15	X.X:±0.5°	APVD Jacob	SCALE:1:1 UNIT:MM
.XXX:±0.05		CUSTOMER COPY	SIZE:A4 SHEET:1F1 REV:A



说明: 1, 将检查合格的产品, 放入承载带中, 一盘包装800PCS;
 2, 将10承载带放入纸箱中;
 3, 将纸箱封装好, 贴上标签.

每箱数量	净重(Kg)	毛重(Kg)
8000PCS	xxx	xxx

MANUFACTURE DWG		 东莞市讯普电子科技有限公司 DongGuan XunPu Electronics Co., Ltd	
UNLESS OTHERWISE SPECIFIED TOLERANCES		TITLE: TYPE-C 6p/16pin沉板 包装图	
		PAR	TYPE-C-318B-WFRX7SC160
		DWN	Lucas
		CHKD	Ethan
		APVD	Jacob
DECIMALS: .X:±0.20 .XX:±0.15 .XXX:±0.05		SCALE 1:1 UNIT:MM	
ANGLES: X.:±2° X.X':±0.5°		SIZE:A4 SHEET:1F1	
		CUSTOMER COPY	REV:A

