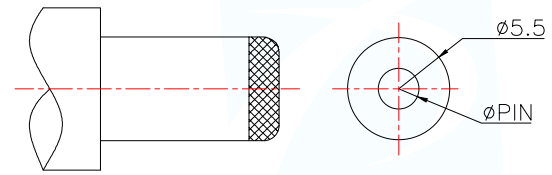
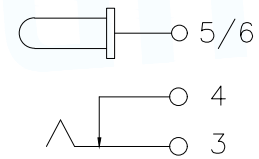


RECOMMENDED PCB LAYOUT  
GENERAL TOLERANCE ±0.05



DC MATE PLUG



SCHEMATIC

Main technical performance	
Rated electrical load	DC 12V 15A
Contact resistance	≤50mΩ
Insulation resistance	>100MΩ DC 500V
Pressure resistance	AC 500V 1MIN
Insertion force	3~30N(0.3~3.0kgf)
extraction force	3~30N(0.3~3.0kgf)
Operating temperature range	-40C°~+85C°
service life	5000cycles

P/N	PIN
DC-511-ARF200-CS030	φ2.0
DC-511-ARF250-CS030	φ2.5

序号	名称	数量	材料	镀层/颜色
6	PIN	1	铜针	镀锡
5	5号脚	1	黄铜=0.3	镀银
4	4号脚	1	黄铜=0.3	镀银
3	3号脚	1	磷铜=0.3	镀银
2	塑料座	1	PA9T	黑色
1	塑料座	1	PA9T	黑色

MANUFACTURE DWG		东莞市讯普电子科技有限公司 DongGuan XunPu Electronics Co.,Ltd	
UNLESS OTHERWISE SPECIFIED TOLERANCES			TITLE: DC SOCKET
DECIMALS:	ANGLES:		PAR DC-511-ARFXXX-CS030
X.:±0.20	X':±1°		DWN Lucas
X.X:±0.10	X.X':±0.5°		CHKD Ethan
X.XX:±0.05		CUSTOMER COPY	APVD Jacob
		SCALE:1:1	UNIT:MM
		SIZE:A4	UNIT:MM
		SHEET:1F1	REV:A