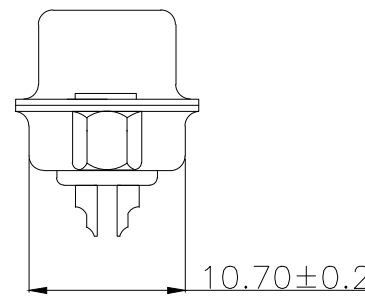
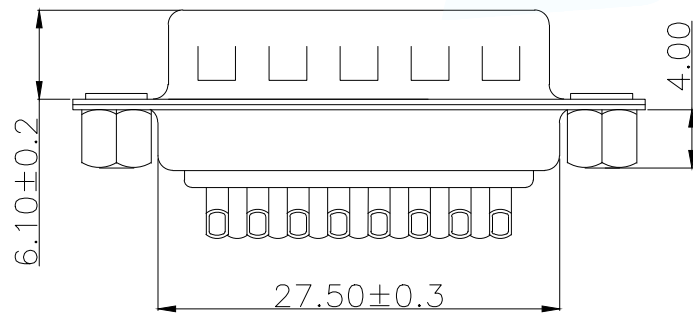
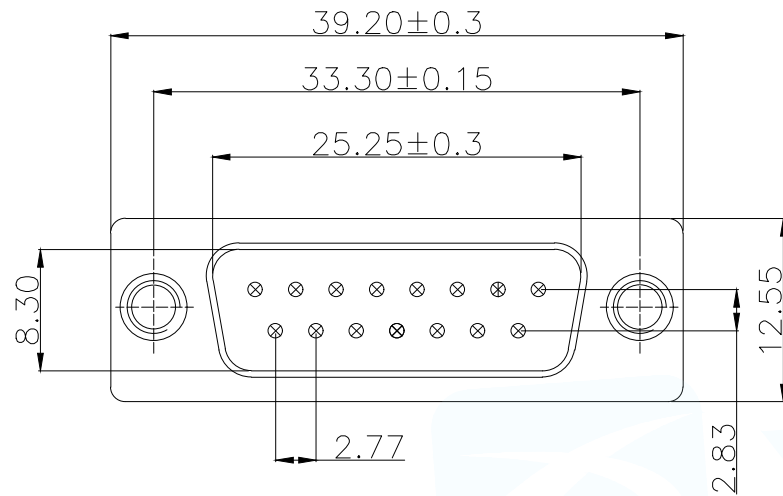


12	13	14	15
MAPX	MODIFICATION	DATE	APPROVE





一、 MATERIAL:

1. Insulator: PBT+30% Glass Fiber
2. Contact: Brass
3. Contact Plated: Gold Flash over Tin Or Gold Plated Or Tin Plated
4. Shell: Steel, Nickel Plated

二、 SPECIFICATION:

1. Current Rating: 3 AMPS
2. Insulation Resistance: 100MΩ MIN. At 500VDC
3. Dielectric Strength: 500V for One minute
4. Operation Temperature: -55° C ~ +105° C.

※【嵌芯颜色、防火要求、环保要求及电镀规格 依据客户实际订单要求为准】

MANUFACTURE DWG		 东莞市讯普电子科技有限公司 DongGuan XunPu Electronics Co., Ltd	
UNLESS OTHERWISE SPECIFIED TOLERANCES			TITLE: DB15M传统后脚 4.0空芯螺母
			PAR D-SUB-DB-15PEG-BB
DECIMALS:	ANGLES:	DWN	
X.X±0.30	X.*±5°	CHKD	
X.XX±0.25	X.X*±2°	APVD	
X.XXX±0.05	X.XX*±1°	SCALE N:A	UNIT:MM
		CUSTOMER COPY	SIZE:A4
			SHEET:1F1
			REV:A