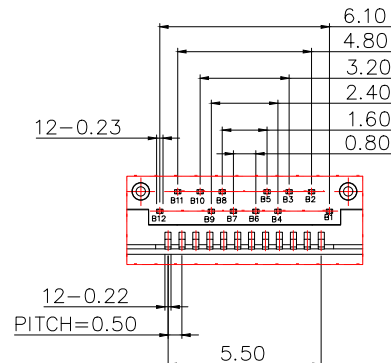
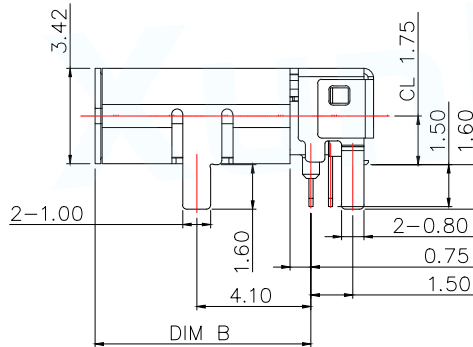


Section A-A  
Scale 1:1



Detail A  
Scale 1:1

NOTES: 1.MATERIAL:

MOLDING: LCP UL94 V-0  
 CONTACT: COPPER ALLOY.  
 GOLD PLATED Min ON CONTACT AREA, 100u"  
 Min TIN (LEAD FREE) ON SOLDER AREA,  
 SHELL: SUS304-1/2H, T=0.30±0.03mm  
 50u" NICKEL PLATING OVER ALL.  
 EMI-SHELL: SUS304-H, T=0.12±0.03mm  
 Shield SHELL: SUS301-H, T=0.15±0.01mm

2.MECHANICAL:

INSERTION: 5~20N.  
 EXTRACTION: 8~20N AFTER TEST.  
 DURABILITY: 10000 CYCLES

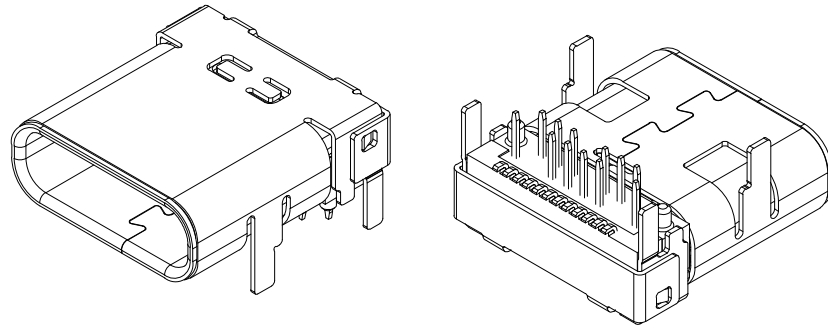
3.ELECTRICAL:

CURRENT: 3A FOR VBUS;  
 1.25A FOR GND PIN.  
 0.25A FOR OTHER.

VOLTAGE: 20 V MAX  
 WITHSTANDING VOLTAGE: 100V AC R.M.S.  
 CONTACT RESISTANCE: 40mΩ MAX.  
 INSULATION RESISTANCE: 100MΩ MIN.  
 4.ENVIRONMENTAL  
 TEMPERATURE RANGE -55°C ~ +85°C

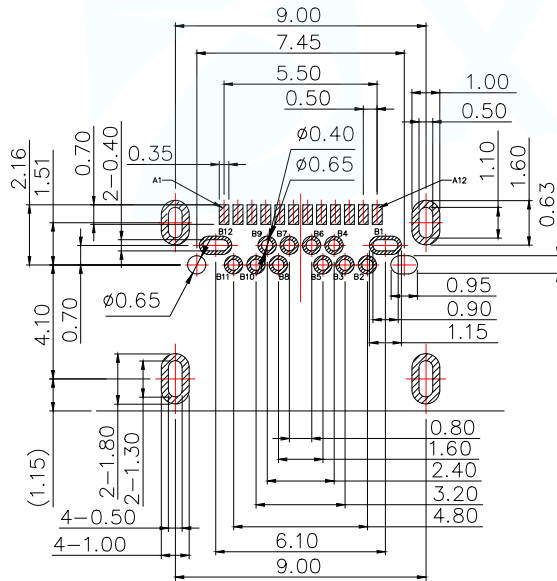
Model No	DIM A	DIM B	DIM C
TYPE-C-605-WGRL995	9.95	7.75	6.15
TYPE-C-605-WGRL860	8.60	6.40	4.80

MANUFACTURE DWG		东莞市讯普电子科技有限公司 DongGuan XunPu Electronics Co., Ltd	
UNLESS OTHERWISE SPECIFIED TOLERANCES			TITLE: TYPE-C 24PIN 板上前插后贴母座 双壳
DECIMALS:	ANGLES:		PAR TYPE-C-605-WGRLXXX
.X: ±0.30	X.°: ±10°		DWN
.XX: ±0.20	.X.°: ±8°		CHKD
.XXX: ±0.10	.XX.°: ±5°	CUSTOMER COPY	APVD
		SCALE: 1:1	UNIT: MM
		SIZE: A4	SHEET: 1F1
			REV: A



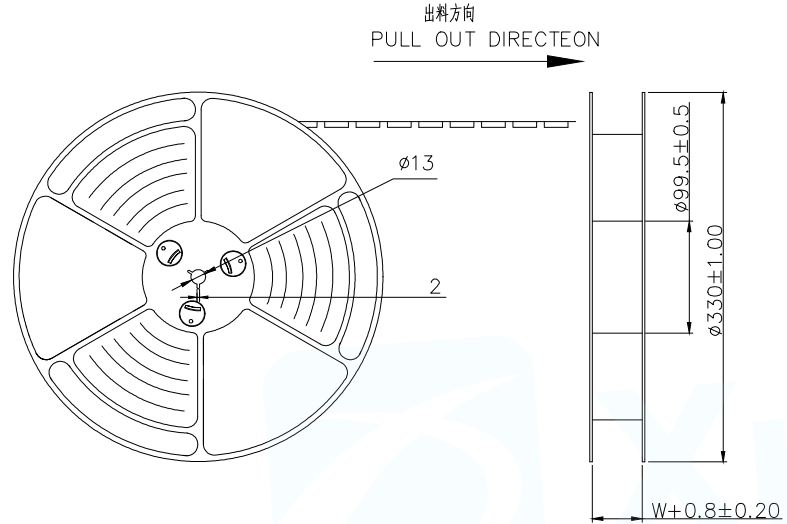
USB TYPE-C FULL-FEATURED RECEPTACLE INTERFACE PIN ASSIGNMENTS

PIN	Signal Name	Description	PIN	Signal Name	Description
A1	GND	Ground return	B12	GND	Ground return
A2	SSTXp1	Positive half of first SuperSpeed TX differential pair	B11	SSRXp1	Positive half of first SuperSpeed RX differential pair
A3	SSTXn1	Negative half of first SuperSpeed TX differential pair	B10	SSRXn1	Negative half of first SuperSpeed RX differential pair
A4	VBUS	Bus Power	B9	VBUS	Bus Power
A5	CC1	Configuration Channel	B8	SBU2	Sideband Use (SBU)
A6	Dp1	Positive half of the USB 2.0 differential pair-Position 1	B7	Dn2	Negative half of the USB 2.0 differential pair-Position 2
A7	Dn1	Negative half of the USB 2.0 differential pair-Position 1	B6	Dp2	Positive half of the USB 2.0 differential pair-Position 2
A8	SBU1	Sideband Use(SBU)	B5	CC2	Configuraation Channel
A9	VBUS	Bus Power	B4	VBUS	Bus Power
A10	SSRXn2	Negative half of second SuperSpeed RX differential pair	B3	SSTXn2	Negative half of second SuperSpeed TX differential pair
A11	SSRXp2	Positive half of second SuperSpeed RX differential pair	B2	SSTXp2	Positive half of second SuperSpeed TX differential pair
A12	GND	Ground return	B1	GND	Ground return



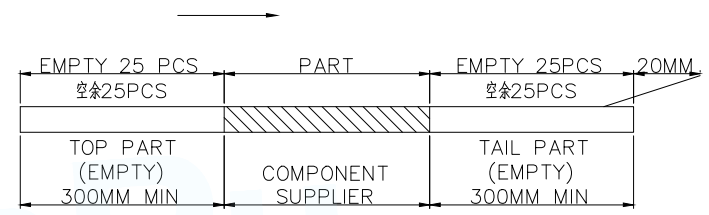
RECOMMEND P.C.B LAYOUT(COMPONENT SIDE)  
TOLERANCE FOR PCB LAYOUT IS ± 0.05

MANUFACTURE DWG		 东莞市讯普电子科技有限公司 DongGuan XunPu Electronics Co.,Ltd	
UNLESS OTHERWISE SPECIFIED TOLERANCES			TITLE: TYPE-C 24PIN 板上前插后贴 母座 双壳
DECIMALS:	ANGLES:		PAR TYPE-C-605-WGRLXXX
.X: ±0.30	X.: ±10°		DWN
.XX: ±0.20	.X': ±8°		CHKD
.XXX: ±0.10	.XX': ±5°	APVD	SCALE:1:1 UNIT:MM
CUSTOMER COPY		SIZE: A4	SHEET: 1F1
			REV: A

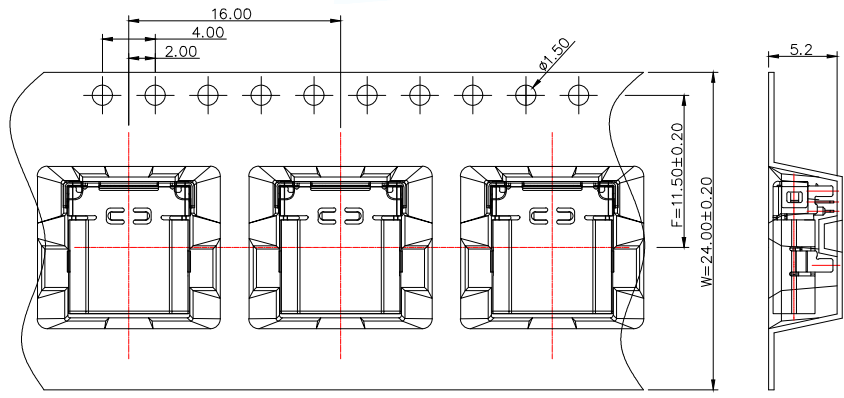


NOTES

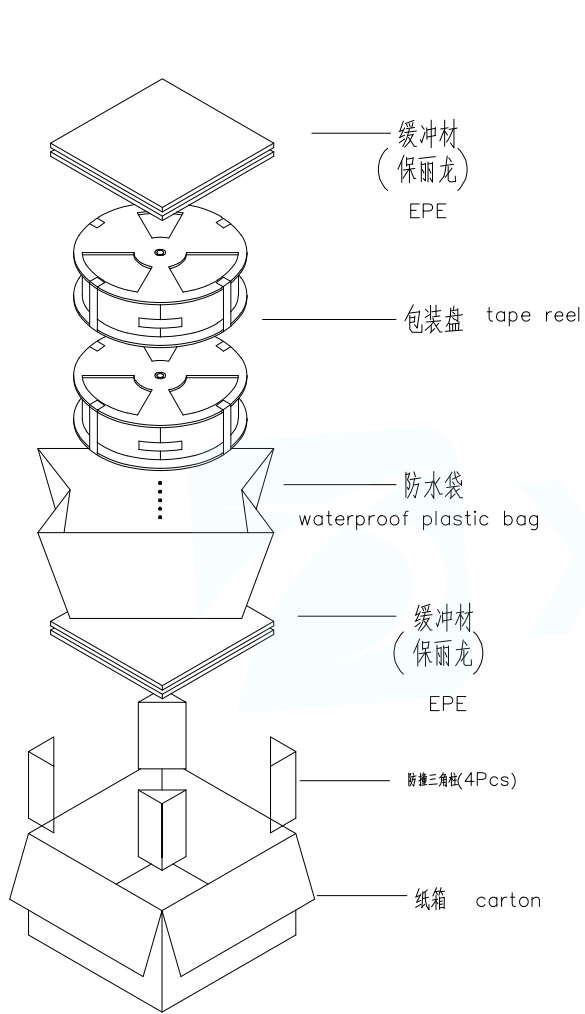
- 带子引导长度  
LEAD TAPE LENGTH  
出料方向  
PULL OUT DIRECTEON



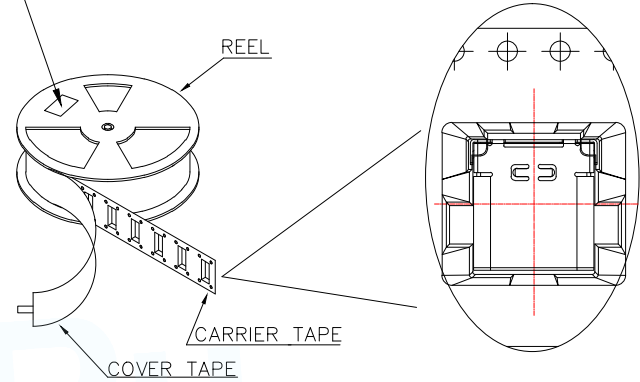
- 出货运输过程中一定注意:  
THIS REQUIREMENT SHOULD BE APPLIED AT SHIPMENT:  
卷带在运输过程中不能散开  
PEELING OFF SHOULD NOT BE ALLOWED DURING TRANSPORTATION



MANUFACTURE DWG		东莞市讯普电子科技有限公司 DongGuan XunPu Electronics Co.,Ltd	
UNLESS OTHERWISE SPECIFIED TOLERANCES			TITLE: TYPE-C 24PIN 板上前插后贴 母座 双壳
DECIMALS:	ANGLES:		PAR TYPE-C-605-WGRLXXX
.X: ±0.30	X.: ±10°		DWN
.XX: ±0.20	.X': ±8°		CHKD
.XXX: ±0.10	.XX'': ±5°	CUSTOMER COPY	APVD
		SCALE: 1:1	UNIT: MM
		SIZE: A4	SHEET: 1F1
			REV: A



at small positioning hole of the carrier tape side).  
 标签粘贴处 (朝卷装包材的小定位孔一侧)  
 Location of label sticking (label)



NOTE:

1. 每卷包装数量及每箱装箱数量如左下表格。  
Packing q'ty of each reel & carton as below table shown.
2. 以上胶带覆盖下包装带经包装机热熔包装  
Use cover tape to cover and hot melt machine to seal up.
3. 每个纸箱放2个珍珠棉  
Every carton use 2pcs EPE.
4. 将装满产品的卷盘放入纸箱并以胶带封口  
Put reels in the carton and use adhesive tape to seal up.

包装容量 (PACKING CAPACITY)			重量 WEIGHT (Kg)		
PCS/REEL	REELS/CARTON	PCS/CARTON	N.W./PCS	N.W./BOX	G.W./BOX
700	8	5600	0.704		

MANUFACTURE DWG		 东莞市讯普电子科技有限公司 DongGuan XunPu Electronics Co.,Ltd	
UNLESS OTHERWISE SPECIFIED TOLERANCES			TITLE: TYPE-C 24PIN 板上前插后贴片 座 双壳
			PAR TYPE-C-605-WGRLXXX
			DWN
			CHKD
DECIMALS:	ANGLES:	APVD	
.X: ±0.30	X.: ±10°	SCALE1:1	UNIT: MM
.XX: ±0.20	.X.: ±8°	SIZE: A4	SHEET: 1F1
.XXX: ±0.10	.XX.: ±5°	CUSTOMER COPY	REV: A