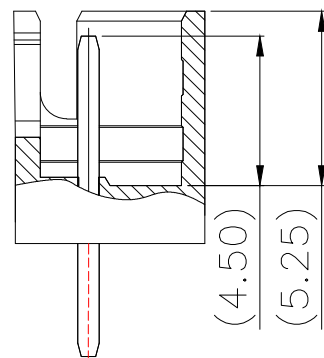
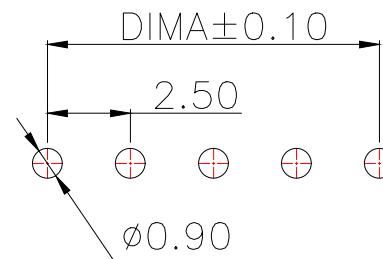
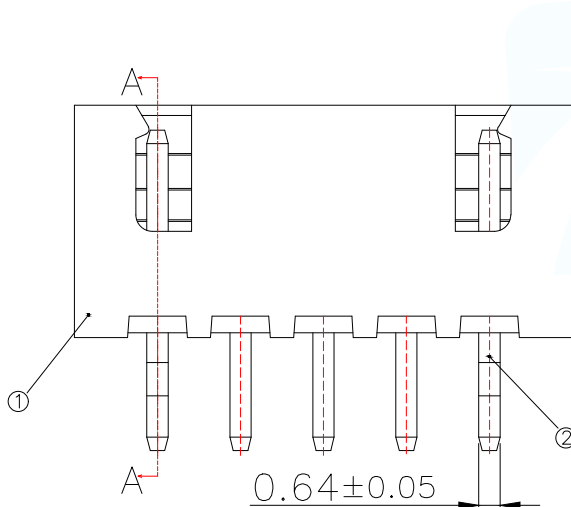


2 Pin样式



SECTION A-A

Part No	Pin	A	B
WAFER-XH2.54-2PZZ-Y61	2	2.5	7.5
WAFER-XH2.54-3PZZ-Y61	3	5.0	10.0
WAFER-XH2.54-4PZZ-Y61	4	7.5	12.5
WAFER-XH2.54-5PZZ-Y61	5	10.0	15.0
WAFER-XH2.54-6PZZ-Y61	6	12.5	17.5
WAFER-XH2.54-7PZZ-Y61	7	15.0	20.0
WAFER-XH2.54-8PZZ-Y61	8	17.5	22.5
WAFER-XH2.54-9PZZ-Y61	9	20.0	25.0
WAFER-XH2.54-10PZZ-Y61	10	22.5	27.5
WAFER-XH2.54-11PZZ-Y61	11	25.0	30.0
WAFER-XH2.54-12PZZ-Y61	12	27.5	32.5
WAFER-XH2.54-13PZZ-Y61	13	30.0	35.0
WAFER-XH2.54-14PZZ-Y61	14	32.5	37.5
WAFER-XH2.54-15PZZ-Y61	15	35.0	40.0
WAFER-XH2.54-16PZZ-Y61	16	37.5	42.5



适用线路板(PCB LAYOUT)

Technical Index:

1. Temperature range: $-25^{\circ}\text{C}\sim 85^{\circ}\text{C}$.
2. Rated voltage: 250V DC/AC(rms).
3. Rated current: 3.0A.
4. Contact resistance: $\leq 20\text{m}\Omega$.
5. Withstanding voltage: 1000V AC/minute.
6. Insulation resistance: $\geq 1000\text{M}\Omega$.

序号	品名	材质
1	XH2.5 嵌芯	PA66 UL94V-2 Beige
2	XH2.5 直针 端子	Copper Alloy/ Tin Plating

MANUFACTURE DWG		东莞市讯普电子科技有限公司 DongGuan XunPu Electronics Co.,Ltd	
UNLESS OTHERWISE SPECIFIED TOLERANCES			TITLE: XH2.5 直针
DECIMALS:	ANGLES:		PAR WAFER-XH2.54-NPZZ-Y61
X.:±0.50	X'::±5°		DWN
.X:±0.20	X.X'::±3°		CHKD
.XX:±0.10	X.XX'::±1°	APVD	SCALE:1:1 UNIT:MM
CUSTOMER COPY		SIZE:A4	SHEET:1F1
			REV:A