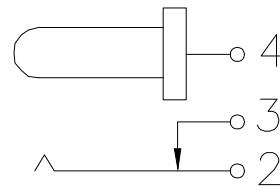


Main technical performance	
Rated electrical load	DC 24V 4.5A
Contact resistance	$\leq 30m\Omega$
Insulation resistance	$\geq 100M\Omega$
Pressure resistance	AC 500V 1min
Insertion force	3-30N
Operating temperature range	-20°C ~ +70°C
service life	5000cycles



SCHEMATIC

PCB.WELDING DRAWING (TOLERANCE:±0.05)

MANUFACTURE DWG		东莞市讯普电子科技有限公司 DongGuan XunPu Electronics Co.,Ltd	
UNLESS OTHERWISE SPECIFIED TOLERANCES		TITLE: DC SOCKET	
DECIMALS: X.X±0.30		PAR	DC-028S-A250
ANGLES: X.*±5°		DWN	
X.XX±0.25		CHKD	
X.XXX±0.15		APVD	
CUSTOMER COPY		SCALE N/A	UNIT:MM
		SIZE:A4	SHEET:1F1
			REV:A