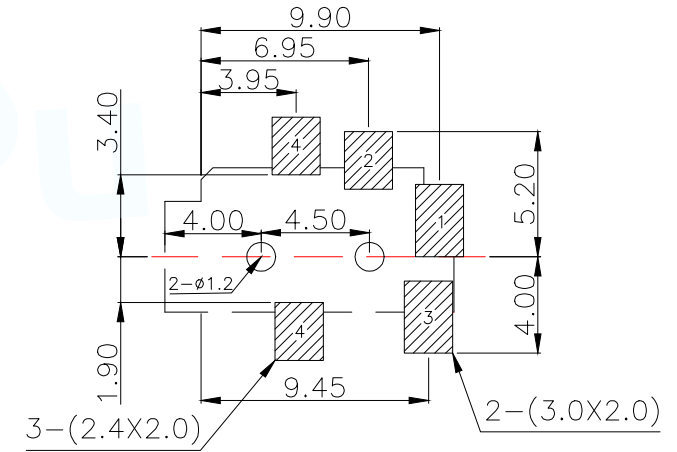
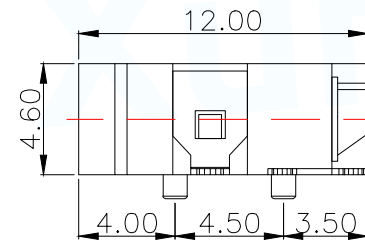
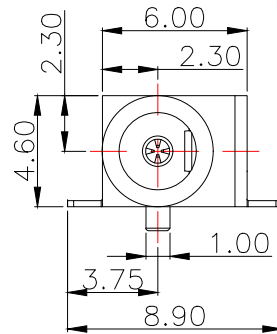
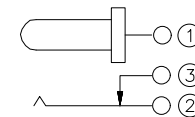


RECOMMEND PULG



PCB.WELDING DRAWING (TOLERANCE:±0.05)

| Main technical performance | |
|-----------------------------|---------------|
| Rated electrical load | DC 12V 2A |
| Contact resistance | ≤0.03Ω |
| Insulation resistance | ≥100MΩ DC250V |
| Pressure resistance | AC 500V 1min |
| Insertion force | 3-30N |
| Operating temperature range | -20C°~+70C° |
| service life | 5000cycles |



SCHEMATIC

| | | | | |
|-----|------------|-----|-----------------|----------------|
| 2 | TIP SPRING | 1 | PHOSPHOR BRONZE | MB:CuSn PLATED |
| 1 | CENTER PIN | 1 | BRASS | MB:CuSn PLATED |
| LTR | PART NAME | QTY | MATERIAL | REMARK |

| | | | | |
|---------------------------------------|--------|---|-----------|-------------|
| MANUFACTURE DWG | | 东莞市讯普电子科技有限公司 DongGuan XunPu Electronics Co.,Ltd | | |
| UNLESS OTHERWISE SPECIFIED TOLERANCES | | TITLE: DC SOCKET | | |
| DECIMALS: | | | PAR | DC-052-A100 |
| ANGLES: | | | DWN | |
| X.X±0.30 | X.*±5° | | CHKD | |
| X.XX±0.25 | X.*±1° | | APVD | |
| X.XXX±0.15 | | SCALE N:A | UNIT:MM | |
| CUSTOMER COPY | | SIZE:A4 | SHEET:1F1 | REV:A |