

注解:

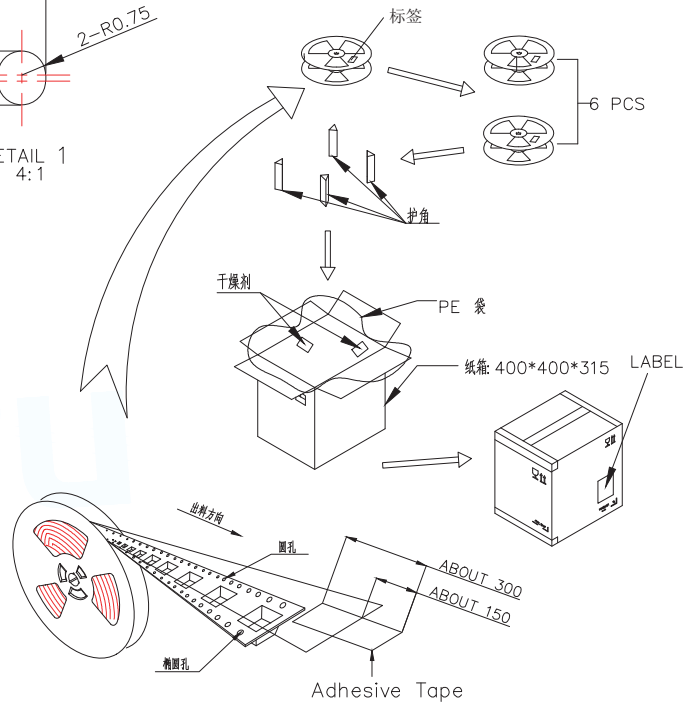
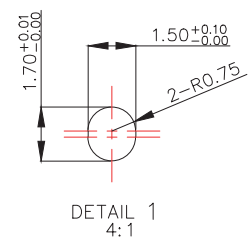
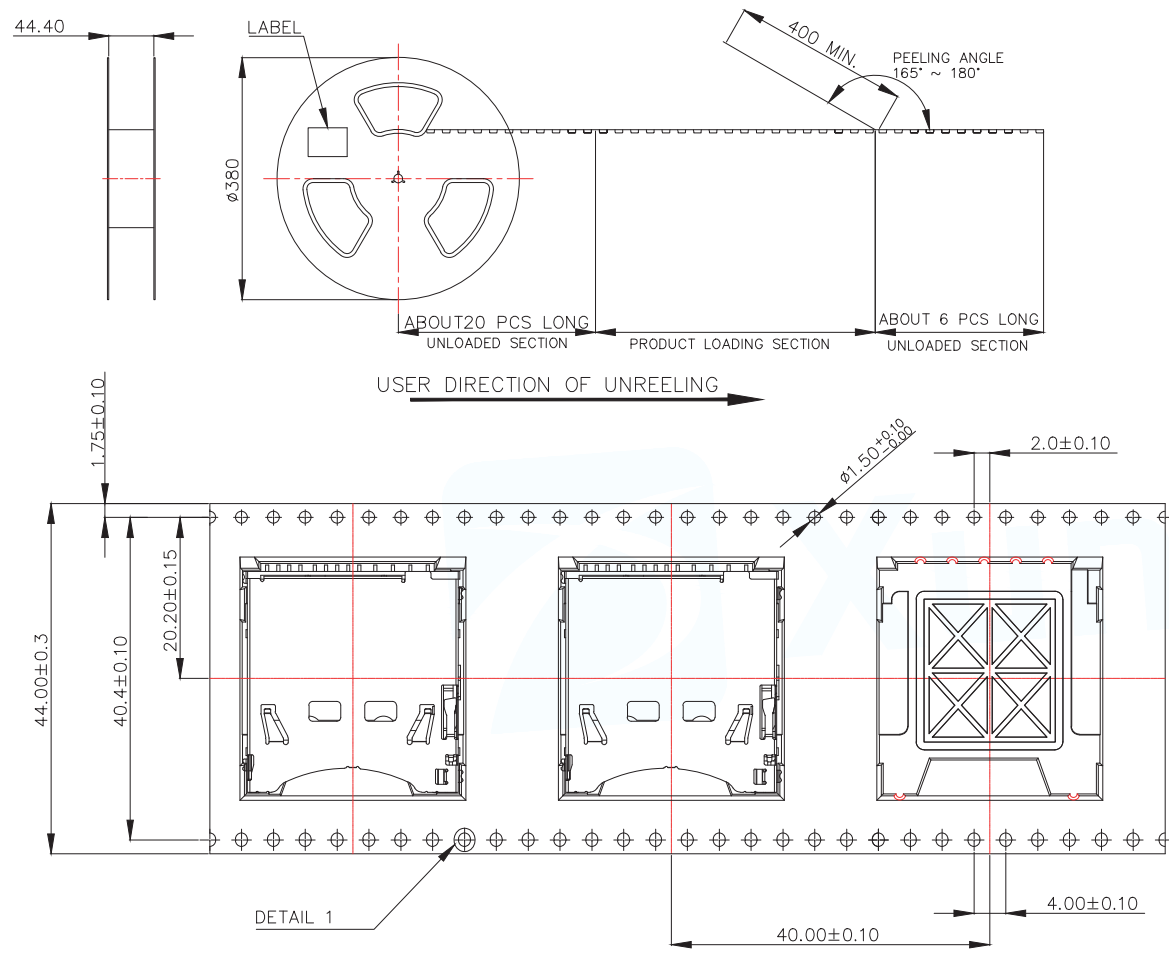
- 材料:
 - 1-1 主体: LCP E471I+30% 玻纤, UL94V-0, 黑色, 符合HF要求
 - 1-2 端子: C5210-EH 料厚=0.12±0.02
 - 1-3 铁壳: SUS301-3/4H 料厚=0.15±0.02
- 电镀:
 - 2-1 端子:
 - 2-1-1 接触面积: 接触点镀金1U"以上, 镀底50U"以上.
 - 2-1-2 焊锡面积: 镀锡80U"以上, 镀底50U"以上.
 - 2-2 铁壳:
 - 2-2-1 焊接口镀金1U"以上, 所有面积镀底50U"以上.
- 焊锡面共面度最大0.1mm
- 物料必须满足无卤WD-3-I-091 规范要求

NOTE:

- MATERIAL:
 - 1-1 PLASTICS: LCP E471I WITH 30% GF, UL94V-0, BLACK, HF
 - 1-2 CONTACTS: C5210-EH THICKNESS=0.12±0.02
 - 1-3 SHELL: SUS301-3/4H THICKNESS=0.15±0.02
- PLATING:
 - 2-1 CONTACTS:
 - 2-1-1 CONTACT AREA: (1u")MIN Gold PLATING ON CONTACT AREA PLATING OVER NI 50u" MIN
 - 2-1-2 SOLDER TALL AREA: MATTE-TIN 80u" MIN PLATING OVER NI 50u" MIN
 - 2-2 SHELL:
 - 2-2-1 1u" MIN GOLD PLATED ON SOLDER TALLS 50u" MIN. NICKEL UNDERPLATING OVER ALL
- CONTACT AND TALL COPLANARITY TO BE 0.10mm MAX.
- PART MUST COMPLY HF WD-3-I-091 SPECIFICATION

	WRITE PROTECT SWITCH		CARD DETECT SWITCH
	WRITE PROTECT POSITION	WRITE ENABLE POSITION	
CARD UN INSERTION	OPEN		OPEN
CARD HALF INSERTION	CLOSE		OPEN
CARD INSERTION	OPEN	CLOSE	CLOSE
N/O			

MANUFACTURE DWG		东莞市讯普电子科技有限公司 DongGuan XunPu Electronics Co., Ltd	
UNLESS OTHERWISE SPECIFIED TOLERANCES			TITLE: SD PUSH 4.4H 垫高1.6
			PAR SD-109-ACP13H16
DECIMALS:	ANGLES:		DWN
.X: ±0.30	X': ±5'		CHKD
.XX: ±0.20	.X': ±3'	APVD	
.XXX: ±0.10	.XX': ±1'	CUSTOMER COPY	SCALE: 1:1 UNIT: MM
		SIZE: A4	SHEET: 1F1
			REV: A



300	6	1800
PCS/ TAPE	REELS/ BOX	QUANTITY

NOTE:

- MATERIAL:
 BOX: FIBREBOARD, CORRUGATED, DOUBLE WALL.
 COVER TAPE: PET, HEAT-RESISTANT TEMPERATURE: 100°C, TRANSPARENT COLOR.
 CARRIER TAPE: POLYSTYRENES, HEAT-RESISTANT TEMPERATURE: 120°C, BLACK COLOR.
 REEL: POLYSTYRENES, HEAT-RESISTANT TEMPERATURE: 70°C, BLUE COLOR.
 BAG: POLYETHYLENE, HEAT-RESISTANT TEMPERATURE: 100°C.
- PEELING STRENGTH: 0.1 ~ 1.3 N (10 ~ 130 GRAMS)
- PEELING SPEED: 300 mm/min.
- EACH BAG SHALL BE INCLUDED DESICCANT.

MANUFACTURE DWG		东莞市讯普电子科技有限公司 DongGuan XunPu Electronics Co.,Ltd	
UNLESS OTHERWISE SPECIFIED TOLERANCES			TITLE: SD-109-ACP13H16 包装图
DECIMALS:	ANGLES:		PAR SD-109-ACP13H16
.X: ± 0.30	X': $\pm 5^\circ$		DWN
.XX: ± 0.20	.X': $\pm 3^\circ$		CHKD
.XXX: ± 0.10	.XX': $\pm 1^\circ$	APVD	SCALE: 1:1 UNIT: MM
CUSTOMER COPY		SIZE: A4	SHEET: 1F1 REV: A