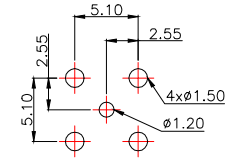
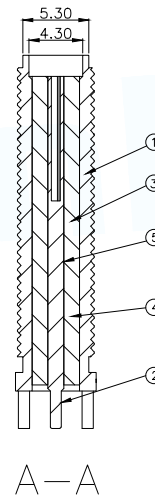
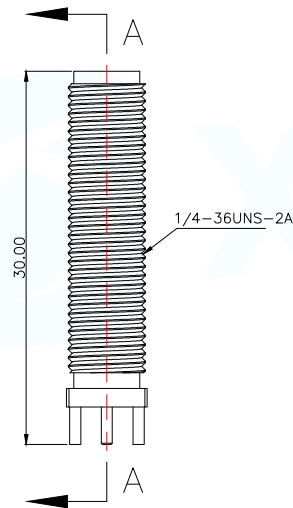
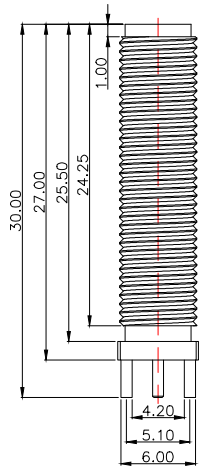
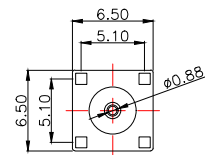


Technical requirements	
Characteristic impedance	50Ω
Frequency range	0-3GHZ
Contact resistance	
Inner conductor	≤3mΩ
Outer conductor	≤2mΩ
Insulated resistance	>5000MΩ
Salt spray time	24H
Separation force	≥0.28N
Appearance: no shift point burr scratch surface bright, no dirt, no deformation, etc	



PCB WELDING DRAWING (TOLERANCE:±0.05)



1	全螺铜座	1	黄铜	镀镍
2	母针	1	黄铜	镀金
3	绝缘体	1	PTFE	
4	绝缘体2	1	PTFE	
5	热缩管	1		
序号	名称	数量	材料	备注

MANUFACTURE DWG

 东莞市讯普电子科技有限公司  
DongGuan XunPu Electronics Co.,Ltd

UNLESS OTHERWISE SPECIFIED TOLERANCES



TITLE:  
正脚-全螺内孔-H30-镀镍

DECIMALS: ANGLES:

X.X±0.30 X.\*±5°

X.XX±0.25 X.X\*±1°

X.XXX±0.15

PAR SMA-KE-347A-H30-N

DWN

CHKD

APVD

SCALE N:A UNIT:MM

SIZE:A4 SHEET:1F1



REV:A