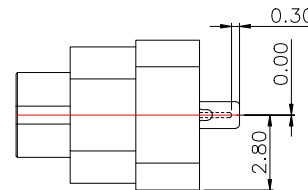
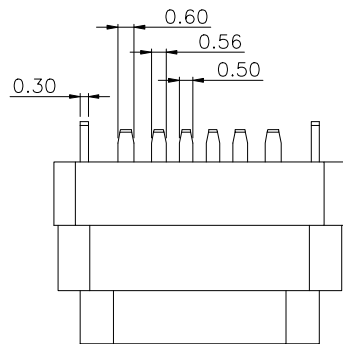
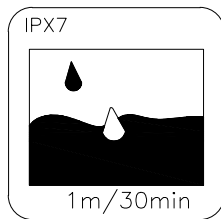
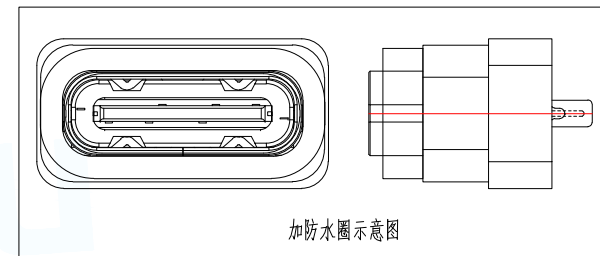
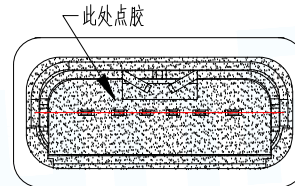
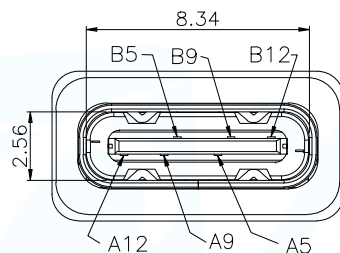
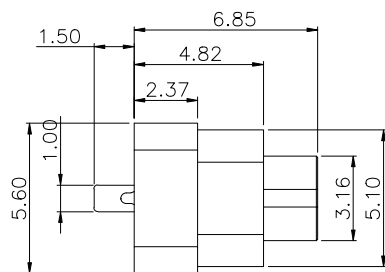


MAPX	MODIFICATION	DATE	DRAW	APPROVE

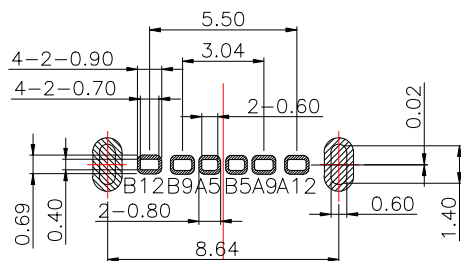
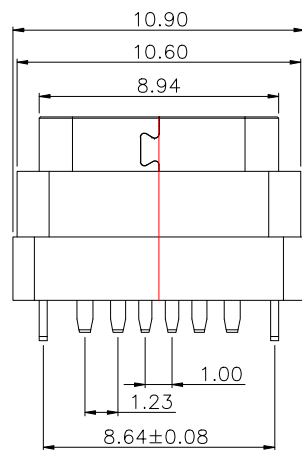


NOTES:  
SPECIFICATION:

1. CURRENT RATING: 3.0A MAX
2. VOLTAGE: 100 VAC
3. TEMPERATURE RANGE: -30 °C ~ 85 °C
4. CONTACT RESISTANCE: 40 MILLIONHM MAX
5. INSULATION RESISTANCE: 100 MEGOHMS MIN.
6. LNSERTION FORCE : 5N~20N
7. UNMATING FORCE: 8N~20N
8. DURABILITY: 10,000 CYCLES
9. WATER PROOFNESS: THIS PRODUCT IS BASED ON IPX7.



A5	CC1	B12	GND
A9	VBUS	B9	VBUS
A12	GND	B5	CC2
PIN	SIGNAL NAME	PIN	SIGNAL NAME



TOLERANCE UNSPECIFIED ±0.05mm

5	防水圈	硅胶	BLACK	1PCS
4	SHELL	STAINLESS STEEL	Ni/Cu Plated	1PCS
3	SHELL	PA9T	UL 94V-0 BLACK	1PCS
2	CONTACT	BRASS	Au Plated	1SET
1	MD	HIGH TEMPERATURE PLASTIC	BLACK	1PCS
NO.	DESCRIPTION	MATERIAL	REMARKS	QTY

MANUFACTURE DWG



UNLESS OTHERWISE SPECIFIED TOLERANCES



TITLE:  
TYPE-C 6pin 直插2脚带铜防水

DECIMALS:	ANGLES:
.X:±0.25	X':±2°
.XX:±0.15	.X":±0.5°
.XXX:±0.05	

PAR	TYPE-C-244LD-ARP6X7
DWN	
CHKD	
APVD	
SCALE:1:1	UNIT:MM
SIZE:A4	SHEET:1F1
CUSTOMER COPY	REV:A